

# MS7640-PTZ-TDT Series

High Resolution IP Dual Vision Thermal Temperature Monitoring

# MoviSight®



- + VOx uncooled Focal plane detector with 640×512 resolution NETD ≤ 40mK (Image can be scaled up to 1280×1024 )
- + 25/50 mm motorized focus thermal lens optional
- + 4 MP Optical Resolution with 30x Optical zoom module + 16X Digital
- + Support Intelligent Human/Vehicle detection, fire point, smoke and fire detection Intelligent analysis: intrusion, single line crossing, double line crossing, loitering, wrong-way, people counting, enter area, leave area.
- + Support 3 temperature measurement rule types (spot, line, area) Temperature measurement range: -20°C ~ 150°C
- + Power off self-locking, strong wind resistance
- + NDAA Compliance, Anti-frozen, IP66



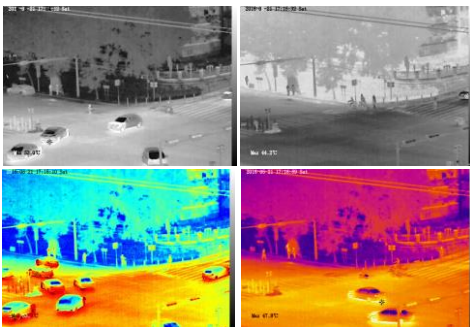
## System Overview

Featuring a motorized lens PT camera, this series provides an all-in-one solution that is especially beneficial for long distance video surveillance in outdoor applications. Together with Thermal technology, the camera's long range capabilities are able to be utilized even at night.

## Functions

### Image Color Modes

White hot/black hot/iron bow/rainbow up to 17 modes



### Compatibility

Symphia , ONVIF Compatible, also provide CGI and SDK for integration



### Temperature Detection

3 temperature measurement rule types, 20 rules in total, 1 full screen, 1 others (spot, areas, line).  
Temp-Detection Range: -40°C~150°C  
\*Extended Temp Detection Optional -20°C to 550°C



### IVS Security

Video Analytics with Intrusion, Single line crossing, Double line crossing, oitering, rong-way, Enter area, eave area (these function support accurate detection of people/vehicles), People counting



Thermal Module	
Image Sensor	Uncooled VOx Focal Plane Arrays
Resolution	Sensor is 640x512. Image can be scaled up to 1280x1024
Pixel Pitch	12µm
NETD	≤ 40 mK
Spectral Range	8 ~ 14 um
Image Setting	Brightness, Sharpness, Contrast, Mirror, FFC control, 2D/3D DNR
Pseudo-color Setting	White-hot/Black-hot/Rainbow/Ironbow etc. up to 17 modes
Thermal Lens	
Focus Control	Motorized Focus
Focal Length	25 mm                      50mm
Aperture	F1.0                              F1.0
Angle of View	H:17°, V:14°                      H: 8°, V:7°
Detection Distance (Fire: 1*1m)	1042 m                              2083 m
Detection Distance (Humans: 1.8*0.5m)	1040 m                              2081 m
Detection Distance (Vehicles: 4*1.5m)	3194 m                              6389 m
Recognition Distance (Humans: 1.8*0.5m)	260 m                                520 m
Recognition Distance (Vehicles: 4*1.5m)	799 m                                1597 m
Optical Module	
Image Sensor	1/2.8" Sony CMOS
Max. Resolution	2592 (H)x1520 (V), 4MP
Shutter Speed	1/5 ~ 1/20,000s
Min. Illumination	Color: 0.01 Lux @ (F1.2, AGC ON), B/W: 0.001 Lux
WDR	True WDR
Focal Length	5.3 ~ 159mm, 30x optical zoom
Aperture	F1.6 ~ F4.3
Angle of View	H: 55° ~ 2.3°, V: 41.6° ~ 1.7°
Digital Zoom	16x
Focus Control	Auto/Manual/Semi-automatic
Mirror	Support
Defog	Support
Privacy Masking	Support
PTZ	
Pan/Tilt Range	Pan: 0° ~ 360° endless, Tilt: +90° ~ -90°
Pan/Tilt Speed	Pan: 0.01° ~ 60°/s, Tilt: 0.01° ~ 30°/s
Wiper	Support with Nanotechnology *
Preset Accuracy	± 0.1°
Presets	400
Scan	8 scans, up to 32 presets per scan
Patrol	12 patrols, up to 32 presets per scan
Track	6 tracks
3D Positioning	Support
Speed Setup	Auto/Manual (0-8)
Power Off Memory	Support
Idle Motion	It can activate Preset/ Scan/Tour/Pattern if there is no command in the specified period

Video and Audio	
Main Stream	Thermal: 1280x1024, 1280x720, 640x512 @ 25/30fps Optical: 2592x1520, 2560x1440, 2304x1296, 1920x1080, 1280x720 @25/30fps
Sub Stream	Thermal: D1, CIF @ 25/30fps Optical: D1, VGA, 640x360, CIF, QCIF, QVGA @25/30fps
Bit Rate Control	CBR/VBR
Bit Rate	Thermal: Main stream: 100Kbps~8Mbps Sub stream: 100Kbps~6Mbps Optical: Main stream: 100Kbps~12Mbps, Sub stream: 100Kbps~6Mbps
Region of Interest	Off/On (8 Zone, Rectangle)
Audio Compression	G711: 8kbps, RAW_PCM: 16kbps
Smart Function	
Smart Alarm	Motion detection, Disk alarm, I/O alarm, IVS alarm, Temperature detection & alarm
Smart Detection	Support human/vehicle detection, fire point detection, smoke and fire detection
Intelligent Analysis	Intrusion, Single line crossing, Double line crossing, Loitering, Wrong-way, Enter area, Leave area (these 7 function support accurate detection of people/vehicles), People counting
Temperature Detection	
Temperature Detection	3 temperature measurement rule types, 20 rules in total, 1 full screen, 19 others (spot, areas, line).
Temperature Alarm	Over temperature alarm, Temperature difference alarm
Accuracy	±2°C / ±2%
Response Time	≤ 30ms
Temperature Range	-20°C to 150°C (-4°F to 302°F), -20°C to 550°C (-4°F to 1022°F) Customizable
Network	
Protocols	IPv4/IPv6, HTTP, RTSP/RTP/RTCP, TCP/UDP, DHCP, DNS, PPPOE, SMTP, 802.1x
Interoperability	Symphonia, ONVIF, CGI, SDK
Max. User Access	10 Users
Web Viewer	<IE11, Chrome, Firefox, Microsoft Edge
Web Language	English, Chinese, Polish, Italian, Portuguese, Spanish, Russian, French, Czech, Hungarian
Interface	
Network Interface	1 Ethernet (10/100 Base-T) RJ-45 Connector
Audio Interface	2ch Audio In, 2ch Audio Out
Alarm Interface	9ch Alarm In, 4ch Alarm Out
RS485	Support
BNC Output	Support
Reset Button	Support (Built-in)
SD Card Slot	Built-in, up to 256GB
General	
Power Supply	DC36V
Power Consumption	Max 80 W
Working Temperature	-40°C~60°C (-40°F~140°F)
Storage Conditions	0 ~ 90% RH
Certifications	CE /FCC
Ingress Protection	IP66
Casing	Metal
Dimensions	419x282x316mm (16.5 x 11.1 x 12.44 inch)
Net Weight	15Kg (Contains 25 mm lens) (33.1 lb)

## Dimensions (mm)

