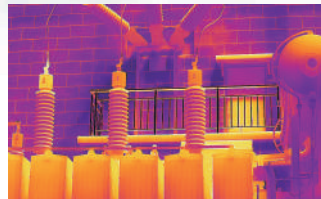


MS7-PT2 Compact Series Dual-Spectrum Thermal Network PTZ Camera

MS7-PT2 series dual-spectrum PTZ thermal network camera equipped with the advanced thermal detectors and high-resolution visible module. Based on the AI algorithm, the camera is able to detect line crossing, intrusion and region entrance/exit. Various measurement rules can be set and the hottest/coldest spot can be automatically tracked. MS-7PT2 series be widely used for perimeter defense, fire prevention in warehouse or gas station, or industrial temperature measurement.



12μm VOx Uncooled Detector

Equipped with new generation MoviSight 12μm uncooled Vox detector to provide advanced thermal image quality

High Accuracy

-20°C~+550°C measure range, ±2°C accuracy with various measurement rules

Smart Video Analysis

Supports Line Crossing, Intrusion on both visible/thermal channel, support fire point detection

Dual-Spectrum Image

Visible light image & thermal image for 24-hours surveillance

Smart Fire Detection

Supports accurate fire detection with thermal image to avoid misreport

High Compatibility

Provides NVR and VMS client, compatible with ONVIF, GB28181 protocols, provides SDK for development

Product Specifications

Technical Specifications	MS-7PT264-T
	Thermal
Detector Type	VOx, uncooled FPA detectors
Spectral Range	8~14μm
NETD	≤40mK(@25°C,F#1.0,25Hz)
Resolution	640×512
Pixel size	12μm
Focal length	9.1mm/13mm/19mm/25mm/35mm
	Visible light
Sensor	1/1.8" 4MP CMOS
Focal length	6.4mm~128mm 20x optical zoom
	PTZ
Pan range	Pan: 360° horizontally
Tilt range	Tilt: -90° ~ +90° vertically
Scan mode	Preset point/Pattern/Tour/2-point/360°
	Temperature measurement
Range	-20°C ~ +550°C
Accuracy	±2°C or ±2%
Measurement rules	3 rule types (point, area, line), 36 rules in total (12 points, 12 areas, and 12 line).
	Smart function
Fire detection	Support fire detection
Cold/Hot Spot tracking	Support Cold/Hot Spot tracking
VCA	Line Crossing/Intrusion detection
Alarm action	Record/Snapshot/E-mail/Relay output
	System interfaces
Power	DC 24V
Network	1×RJ45 10M/100M/1000M self-adaptive interface
RS485	1×RS485, support Pelco
Audio input	1×audio in
Audio output	1×audio out
Alarm input	2×alarm input
Alarm output	2×alarm output
Edge storage	Support Micro SD (max. 256G)
	General
Work temperature	-40°C ~ +70°C; <90%RH
Protection	IP66, TVS 6000V, Lightning/Surge protection conforms to GB/T17626.5 4th-Grade
Power consumption	≤30W
Dimension (mm)	358× 164.5× 203
Weight	4.5KG

Application

