

MS7000D-TDT Series

Dual Vision Temperature Detection Thermal



- On-Board Temp-Detection Algorithm
- One IP address Two channels
- Effective Pixels 400x300
- Sensitivity 40mK
- 25/50mm Fixed Lens Optional
- 20 Spots / 2 Lines / 16 Areas Temperature Detection
- 17 Color Control
- DVE image enhance
- Power Off Self-Locking, Strong Wind Resistance
- Anti-Frozen
- Standalone Operating

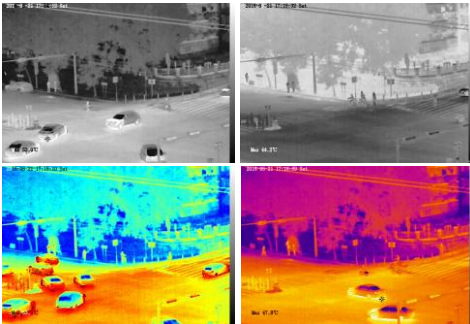
System Overview

Featuring a motorized lens PT camera, this series provides an all-in-one solution that is especially beneficial for long distance video surveillance in outdoor applications. Together with Thermal technology, the camera's long range capabilities are able to be utilized even at night.

Functions

Image Color Modes

White hot/black hot/iron bow/rainbow up to 17 modes



Compatibility

ONVIF Compatible, also provide CGI and SDK for integration



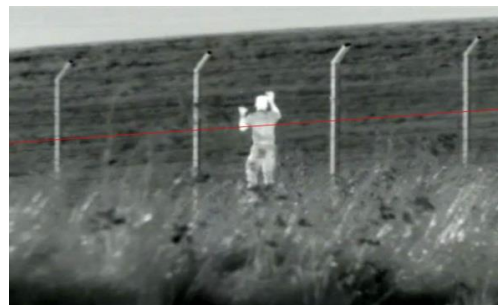
Temperature Detection

20 spots, 2 lines, 16 areas
Temp-Detection Range: -40°C~150°C (-40°F~302°F)



IVS Security

Video Analytics with Perimeter, Single Virtual Fences, Double Virtual Fences, Object Left, Object Removed



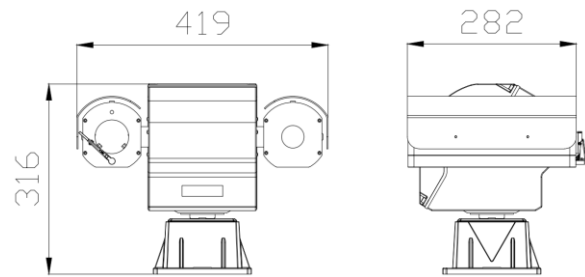
Technical Specification

Thermal Camera	
Detector Type	Uncooled IRFPA Microbolometer
Effective Pixels	400(H) × 300(V)
Pixel Size	17um
Thermal Sensitivity (NETD)	40mK @F1.0, 300K
Spectral Range	8~14um
Image Setting	Polarity LUT/ DVE/ Mirror/ FCC/ /3D DNR Brightness/Contrast/ ROI
Color Palettes	Black-Heat /White-Heat/Rainbow/Iron-Red up to 17 modes
Thermal Lens	
Lens Type	Fixed
Focus Control	Motorized Focus
Focal Length	25mm 50mm
F No.	F1.0 F1.0
Angle of View	H:15.4°, V:11.6° H: 7.7°, V:5.8°
Detection Distance Fire(1m*1m)	735m 1471m
Detection Distance Man(1.8m*0.5m)	735m 1471m
Detection Distance Vehicle(4m*1.5m)	2255m 4510m
Recognition Distance Fire(1m*1m)	245m 490m
Recognition Distance Man(1.8m*0.5m)	184m 368m
Recognition Distance Vehicle(4m*1.5m)	564m 1127m
Visible Camera	
Image Sensor	1/1.9" Sony CMOS
Effective Resolution	1920(H)×1080(V)
Shutter Speed	1/5 ~ 1/20,000s
Min. Illumination	Color: 0.001Lux @(F1.2, AGC ON), B/W: 0.1Lux
S/N Ratio	More than 55dB
Visible Lens	
Focal Length	6 ~ 180mm
Max Aperture	F1.5 ~ F4.3
Angle of View	H: 59° ~ 2.4°
Optical Zoom	30x
Focus Control	Auto / Manual
Close Focus Distance	100mm~ 1000mm (0.33ft~3.28ft)
PTZ	
Pan/Tilt Range	Pan: 0° ~ 360° endless; Tilt: +90° ~ -90°
Pan/Tilt Speed	Pan: 0.01° ~60° /s; Tilt: 0.01° ~30° /s
Preset Speed	Pan: 0.01° ~60° /s; Tilt: 0.01° ~30° /s

Presets	400
PTZ Mode	8 Auto Scan, 12 Tour, 6 Track
Speed Setup	Auto/Manual (0-8),
Power Off Memory	Support
Idle Motion	Activate Preset/ Scan/ Tour/ Pattern if there is no command in the specified period
Protocol	SN-SD, Pelco-D
Video and Audio	
Compression	H.265, H.264, MJPEG
Frame Rate	Main Stream: Thermal: D1 @25/30fps Visible: 1920×1080/1280×720 @25/30fps Sub Stream: Thermal: CIF @25/30fps Visible: D1/VGA/640×360/CIF/QCIF/QVGA @25/30fps
Bit Rate Control	CBR/VBR
Bit Rate	Thermal: 100Kbps~6Mbps Visible: main stream: 500Kbps~12Mbps; sub stream: 100Kbps~6Kbps
Region of Interest	Off / On (8 Zone, Rectangle)
Electronic Image Stabilization(EIS)	N/A
Digital Zoom	16x
Mirror	Support
Defog	Support
Motion Detection	Support
Privacy Masking	Off / On (4 Area, Rectangle)
DVE Image Enhance	Support
Audio Compression	G.711, AMR, RAW_PCM (Optional)
Intelligence	
Intelligent Functions	Motion detection, Disk alarm, I/O alarm, Temperature alarm
IVS	Perimeter ,Single Virtual Fences ,Double Virtual Fences ,Object Left ,Object Removed
Temperature Detection	
Detection Mode	Spot, Line, Area
Detection Preset	Support 3 temperature measurement rule types, 20 rules (20 points / 2 lines / 16 regions)
Temperature Alarm	Over temperature alarm, Temperature difference alarm
Accuracy	±2℃ / ±2%
Response Time	≤30ms
Effective temperature working environment	-40℃ ~ 60℃ (-40°F ~ 140°F)
Theory of temperature measurement range	-40℃ ~ 150℃ (-40°F ~ 302°F)
Temperature display mode	Temperature target >5℃, Display absolute temperature value; Temperature target ≤5℃, Display relative temperature value (temperature difference DEV = highest value - average)

Network		
Ethernet	RJ-45 (10/100Base-T)	
Protocols:	IPv4/IPv6, HTTP, RTSP/RTP/RTCP, TCP/UDP, DHCP, DNS, PPPOE, SMTP, SIP, 802.1x	
Interoperability	ONVIF, CGI	
Streaming Method	Unicast	
Max. User Access	10 Users	
Edge Storage	NAS Local PC for instant recording Micro SD card 128GB	
Web Viewer	<IE11, Chrome, Firefox	
Web Language	English, Chinese, Polish, Italian, Portuguese, Spanish, Russian, French, Czech, Hungarian	
Interface		
Ethernet	1 Ethernet (10/100 Base-T) RJ-45 Connector	
Audio Interface	2ch Audio In, 2ch Audio Out	
Alarm	9ch Alarm In, 4ch Alarm Out	
RS485	Support	
BNC Output	Support	
Reset Button	Support (Built-in)	
General		
Power Supply	DC36V	
Power Consumption	Max 80W	
Operating Temperature	-40°C~60°C (-40°F~140°F)	
Storage Conditions	0~90% RH	
Certifications	CE /FCC	
Ingress Protection	IP66	
Casing	Metal	
Dimensions	282×419×316mm	
Net Weight	16Kg	
Ordering Information		
Type Part	Number	Description
MS7000-TDT Series	MS7000-TDT-2530	Thermal: 400×300 25mm Motorized lens
	MS7000-TDT-5030	Thermal: 400×300 50mm Motorized lens

Dimensions(mm)



For More information, please visit www.movisight.com